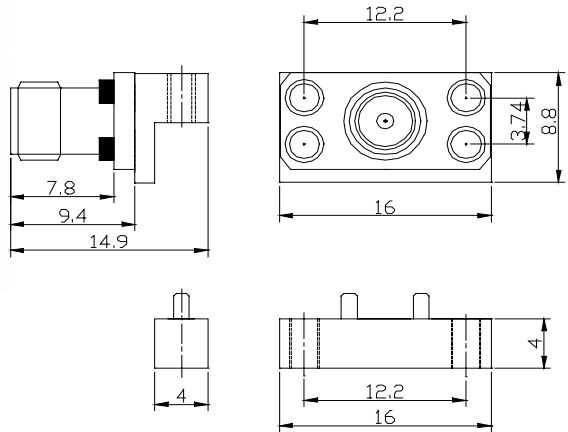
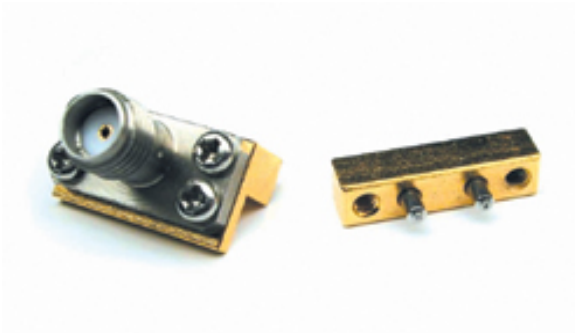


# Edge Mount SMA Connector

The GigaLane *Edge Mount SMA Connector* has excellent electrical performance from DC to 24 GHz. It's designed for applications such as Multi-layer board with coplanar waveguide and single layer board with microstrip.



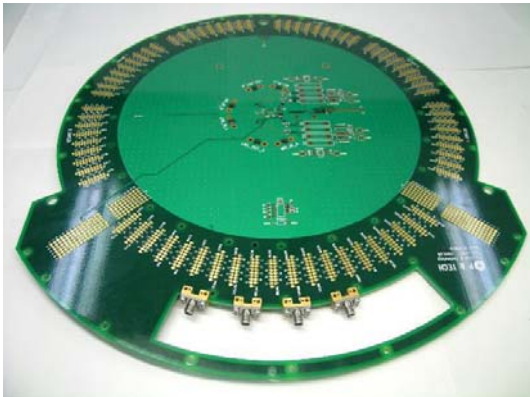
**Part No. : PSF-S05**

## Features

- DC to 24 GHz
- Easy Installation on RF circuit board
- Useful on Multi-layer board with coplanar waveguide
- Useful on Single-layer board with microstrip

## Applications

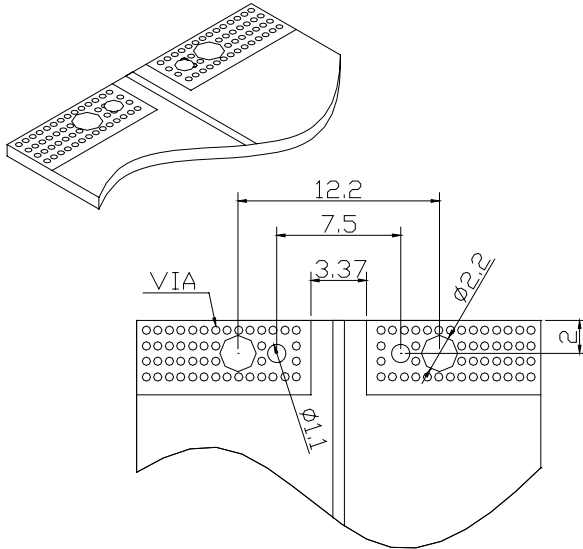
- RF Test Board
- Chip Set Evaluation Board



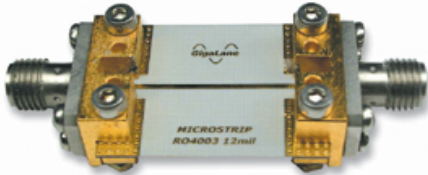
# Edge Mount SMA Connector

## Recommended PCB

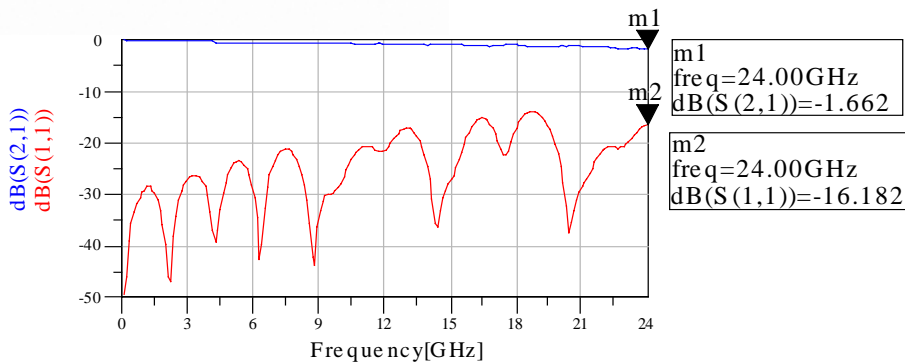
- Microstrip Width : 0.3~1.7mm available
- Via Hole Size : 0.5mm diameter



## Test Results



- Board Material : RO4003
- Board Thickness : 12 mil
- Line Length : 26 mm



[1] Parameters listed are typical value. They are guaranteed only when maximum/minimum limits are given

[2] Frequency response measured using HP8510C network analyzer from 45 MHz to 24 GHz.